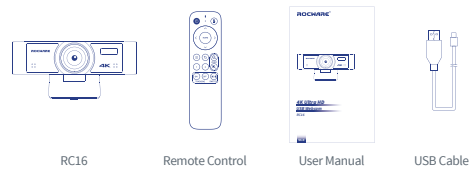


**4K Ultra HD
USB Webcam**

RC16

V1.0

1 Packing List



2 Product Main Features

- Ultra-high Definition and Ultra-large Field of View**
 Equipped with a new generation UHD CMOS image sensor, accurate native resolution, richer color, and 4K video with full detail. With a 110-degree ultra-large angle and low distortion 4K lens, the panoramic view is unobtrusive.
- AI Ability**
 Multi-layer convolutional neural network design with cutting-edge deep learning algorithms, enable intelligent camera features, and high quality analysis data can be accessed through open APIs.
- Auto Framing**
 This advanced deep learning algorithm is adapted to automatically adjust the size of the picture according to the people in the detectable field of view, eliminating the need for manual adjustment, and bringing you a new intelligent experience.
- AI Humanoid Tracking**
 Embedded NNE hardware unit, using deep learning technology, through the extraction of target features, no matter where one is facing, smooth humanoid tracking can be achieved , suitable for tracking a speaker or other application scenarios.
- Microphone Array**
 Built-in beamforming microphone array with unique noise reduction and automatic gain control algorithms, allow for a pick up distance of up to 6 meters, and makes your voice sound crystal clear.

● Convenient Operation

With the infrared remote control and exclusive software, auto framing and humanoid tracking can be initiated with one button. As well as, preset positions, ePTZ, and image parameters can be set at the same time.

● USB 3.0

Full-function USB 3.0 interface offers power supply, video, and audio all in one USB cable/USB port. It can also support 2 USB video signal sources (optional), +1 channel audio source at the same time.

3 Specification

| Camera | |
|-------------------------|---|
| Sensor | 1/2.7", CMOS, Effective Pixel: 8.29M |
| Scanning Mode | Progressive |
| Lens Mount | M12 |
| Lens | Focus: f=2.2mm, FOV: 110° |
| Minimum Illumination | 0.5 Lux @ (F1.8, AGC ON) |
| Shutter | 1/30s~1/10000s |
| White Balance | Auto, Indoor, Outdoor, One Push, Manual |
| Camera Bracket | Bracket with damper |
| Digital Noise Reduction | 2D&3D Digital Noise Reduction |
| Backlight Compensation | Support |
| Digital Zoom | 8X |
| Input/Output Interface | |
| USB Interface | 1xUSB 3.0: Type C, female |
| IR Remote | Support |

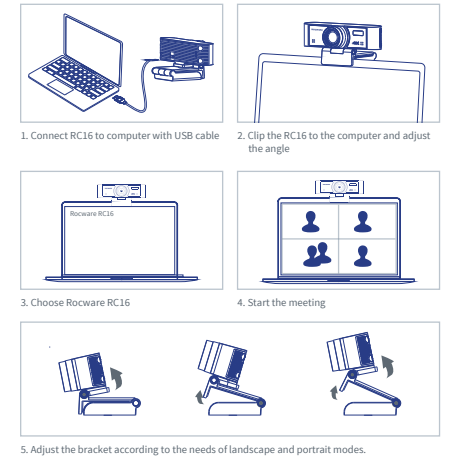
USB Features

| | |
|--------------------------|--|
| Operate System | Windows® 7 (1080P and under only), Windows 8.1, Windows 10 or higher macOS™ 10.10 or higher Google™ Chromebook™ Version 29.0.1547.70 or higher Linux (support UVC) |
| Hardware Requirement | 2.4 GHz Intel® Core 2 Duo CPU or higher; 2 GB RAM or more; USB 2.0 interface |
| Color System/Compression | YUY2 / H.264 / MJPEG |
| Video Format | 4K30/25, 1080P30/25, 720P30/25, 960x540P30/25, 640x360P30/25 etc. |
| USB Protocol | UVC 1.1 |
| UVC PTZ | Support (EPTZ) |

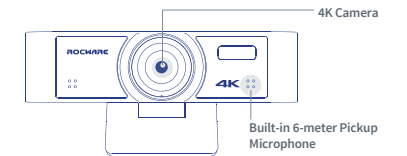
General Specification

| | |
|-----------------------|---|
| Input Voltage | 5V (USB power supply) |
| Current Consumption | 600mA (max.) |
| Operating Temperature | 0°C~40°C |
| Storage Temperature | -40°C~60°C |
| Power Consumption | 3.0W (max.) |
| Size | 118mm x37.2mm x 30.8mm (Bracket not included) |
| Net Weight | 0.2Kg |
| WTBF | 30000h |

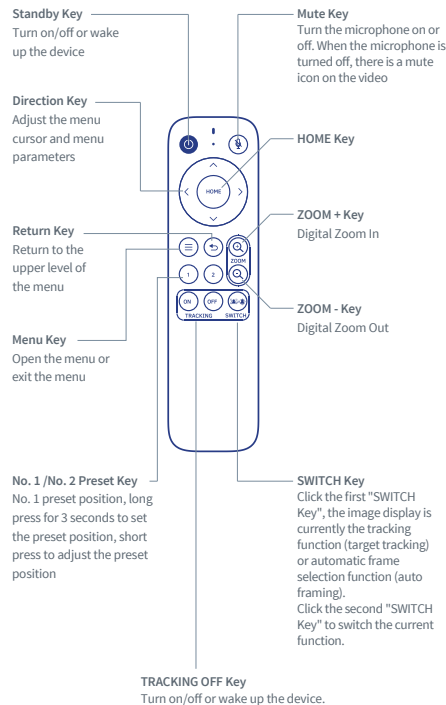
4 Simple Operation Steps



5 Product Details



6 Remote Control



7 Safety Precautions

- In the process of transportation, storage, and installation, the damage caused by heavy pressure, violent vibration, and immersion should be opened.
- The product should be placed on a stable surface or other horizontal platforms. The shell of this product is made of organic materials; avoid contact with liquids, gases, or solids that may cause corrosion of the shell.
- Do not disassemble the product without authorized permission.
- This product has no parts that consumers can repair by themselves; damage caused by consumer disassembly is not covered by a warranty.



Operating this equipment in a residential environment may cause radio interference.

8 Maintenance and Troubleshooting

Camera Maintenance

- If the camera will not be used for a long time, turn off the power switch after use.
- Use a soft cloth to clean the camera body.
- Use a soft and dry cloth to clean the camera lens. If the lens is very dirty, clean it with diluted neuter detergent. Do not use any type of solvents, which may damage the surface.

Unqualified Application

- Avoid shooting particularly bright objects, such as sunlight, lightings, etc.
- Do not operate in unstable lighting conditions. Otherwise, the image will flicker.
- Do not use around powerful electromagnetic radiation, such as television stations or radio transmitters, etc.

Troubleshooting

| Fault Phenomenon | Solution |
|--|---|
| No image output | 1. Check whether the privacy cover is open. 2. Whether to enable multiple software access. The camera supports only one access. |
| The camera cannot be recognized after power on | Check whether the USB cable of camera is properly connected. |
| Upgrade failed | 1. Check whether the camera is recognized correctly after connecting to PC, and whether the connection is successful. If yes, re-upgrade it. 2. Check if multiple software is trying to access the camera. The camera supports only one access. 3. Open the upgrade software, if it shows that the connection fails, but the camera is connected to the PC and can be accessed normally. It is recommended to try connecting to another PC. |
| Image flip | If the image is flipped, please use the remote control to call up the "Image Rotation" option in the menu bar to adjust. |
| Image has stripes that scroll up and down | Check the anti-flicker frequency of the camera. Set the power supply frequency to the same value as the anti-flicker frequency. |
| Image comes and goes from time to time | Check whether the cable of the video platform and TV is properly connected. |
| Android platform device has no image | 1. Check whether the camera is recognized in the system. If not, restart the Android platform. 2. Set H264 to off by default on the tool and restart the camera. |

